

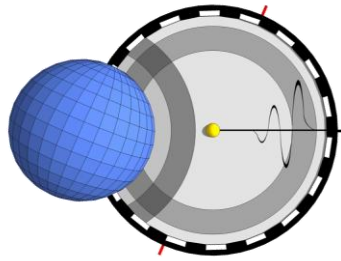
# GEO-MARINE TECHNOLOGY, INC.

A Geological, Geophysical, and Hydrographic Survey Consultancy

## COMPANY PROFILE

OUR MISSION AND TRADE





# GEO-MARINE TECHNOLOGY, INC.

A Geological, Geophysical, and Hydrographic Survey Consultancy

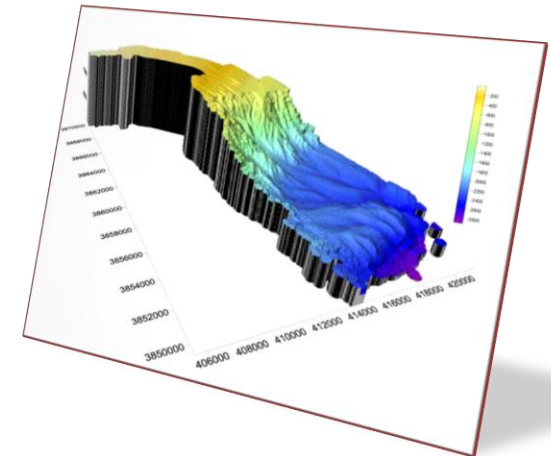
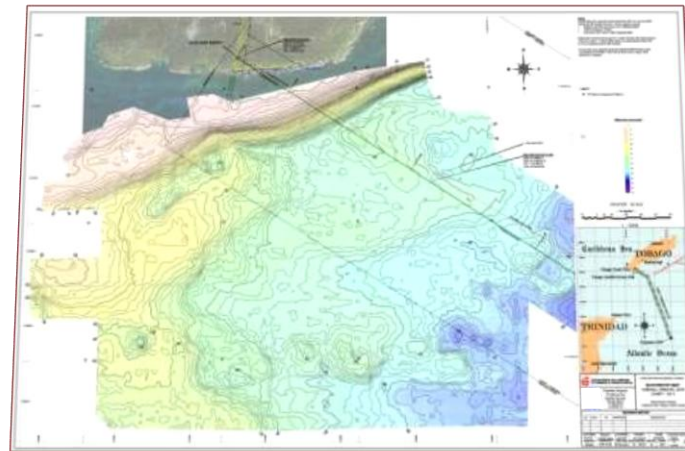
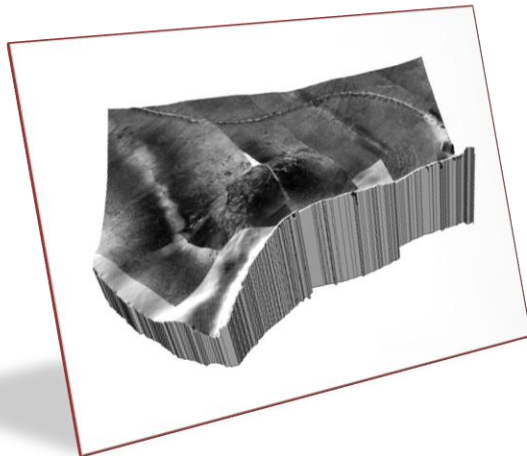
## OUR MISSION:

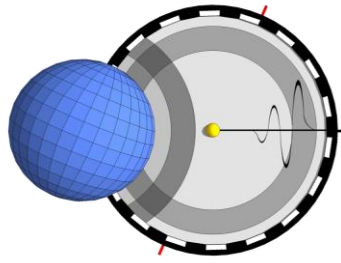
We are high-quality data analysts who combine scientific expertise with state-of-the-art software to efficiently provide solid technical products and services to the offshore energy and telecommunications industries with cooperation, innovation and integrity.

## OUR TRADE:

The consultancy of Geo-Marine Technology, Inc. specializes in Offshore Survey Services and Desktop Study production for all types of marine construction and exploration projects. We use state-of-the-art computerized technologies, in-house programming and published information sources to provide superior geological and geophysical data interpretations and reports.

Headed by Mr. John L. Rietman and Mr. Beau Pallister, Geo-Marine Technology has more than 40 years of experience in analyzing and interpreting geological and geophysical data. Our highly knowledgeable scientists are proficient at completing Offshore Survey Projects and Desktop Studies from the ground up. This capability improves our efficiency and helps keep our clients' projects under budget. With Geo-Marine Technology, your success is our success.



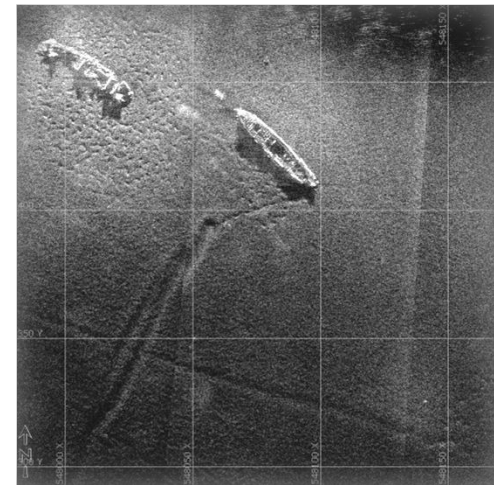


# GEO-MARINE TECHNOLOGY, INC.

A Geological, Geophysical, and Hydrographic Survey Consultancy

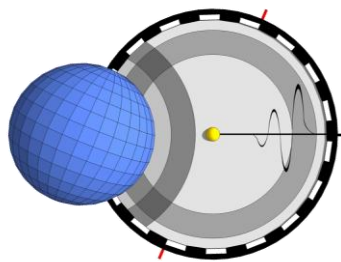
## OFFSHORE SURVEY SERVICES

SUPPORT, DATA ANALYSIS AND REPORTING



\*Image courtesy of Williamson and Associates



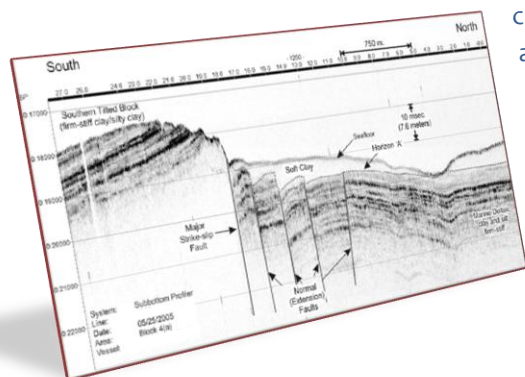


# GEO-MARINE TECHNOLOGY, INC.

A Geological, Geophysical, and Hydrographic Survey Consultancy

**OFFSHORE SUPPORT:** Our team is highly experienced in providing shipboard Offshore Survey support, and we work closely with our clients to ensure data quality and completeness during data acquisition and evaluation. Whether on the boat or in the office, our management team is on call 24 hours a day to mitigate challenges as they arise.

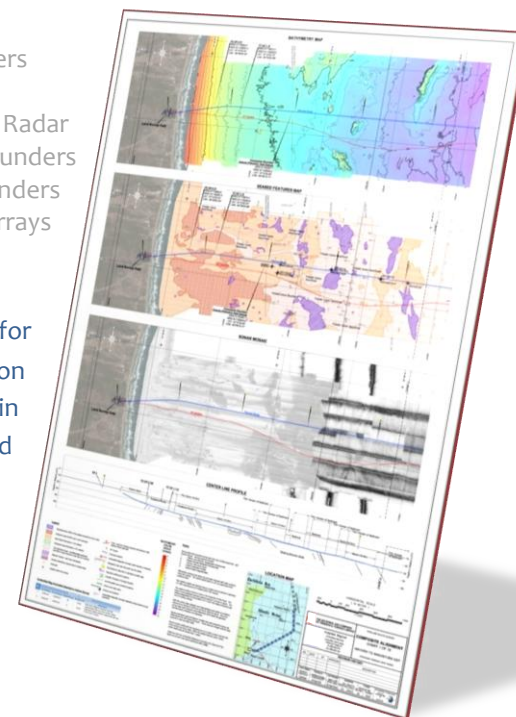
**DATA ANALYSIS:** Geo-Marine Technology has analyzed and interpreted over 1 million line kilometers of Offshore Survey data. By staying on the cutting edge of technological advances, we are able to adapt new and innovative techniques for data reduction, analysis and in-house repair for “problem” or unusual digital datasets. Our knowledge base includes the following systems, to name a few:

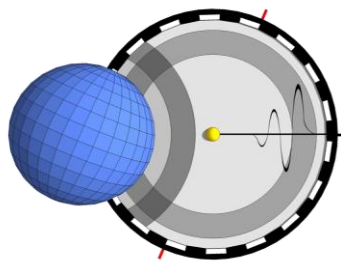


- 2D and 3D Seismic Arrays
- EM Gradiometers
- Magnetometers
- Navigation Systems (GPS)
- Side Scan Sonar Systems
- Subbottom Profilers
- Cone Penetrometers
- Boomers and Sparkers
- Gamma Probes
- Ground Penetrating Radar
- Single Beam Echosounders
- Multibeam Echosounders
- Resistivity Probes/Arrays
- E-BASS

**REPORTING:** Geo-Marine Technology produces hazard analysis and route investigation reports for clients the world over. Our reports provide recommendations based on comprehensive analyses of seabed conditions and geologic hazards identified in Offshore Survey data sets, core samples, and remotely sensed and published information. A variety of maps and charts compliment our reports, and include:

- Sonar Mosaics
- Hazards Charts
- Hydrographic Charts
- Sediment Isopach Maps
- Geologic Structure Maps
- Seabed and Sediment Profiles



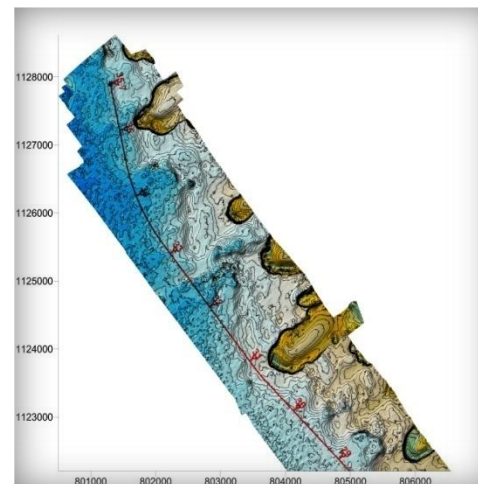


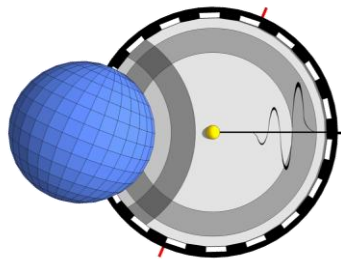
# GEO-MARINE TECHNOLOGY, INC.

A Geological, Geophysical, and Hydrographic Survey Consultancy

## DESKTOP STUDIES

SITE VISITS, RESEARCH AND REPORTING





# GEO-MARINE TECHNOLOGY, INC.

A Geological, Geophysical, and Hydrographic Survey Consultancy

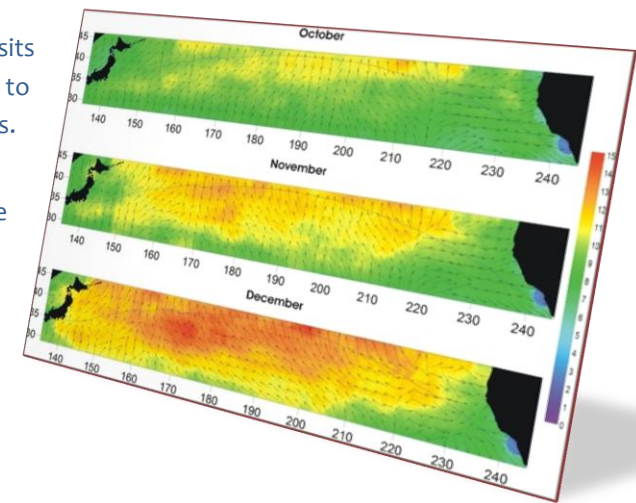
## SITE VISITS:

Geo-Marine Technology's experienced personnel have performed site visits in many countries – including Panama, Japan, Trinidad and others – to assess the feasibility and associated hazards of potential landfall locations.

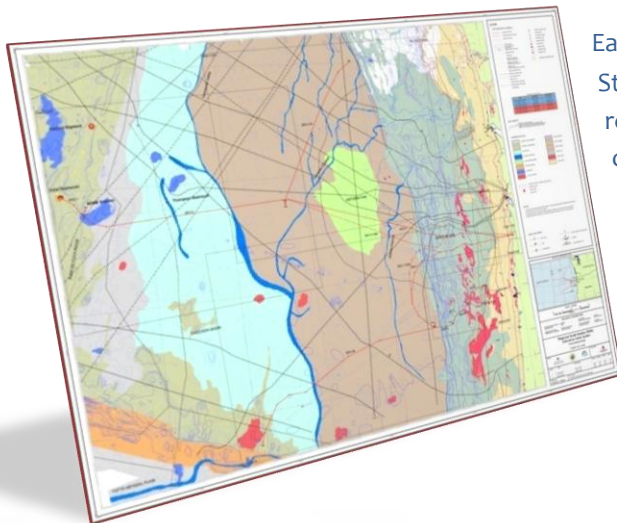
## RESEARCH:

Desktop Studies are an integral component of potential offshore construction projects. At first order, our research assesses potential natural and anthropomorphic hazards of a given study area by compiling and synthesizing all available data addressing the following concerns:

- Bathymetry
- Oceanography
- Meteorology
- Archaeology
- Human Impacts
- Permitting
- Geology
- Climatology

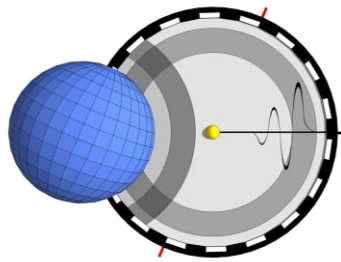


## REPORTING:



Each proposed offshore construction project is unique, so the format of our Desktop Studies is highly adaptable in order to best meet the needs of our clients. Every report we produce provides specific recommendations based on the salient aspects of our data analyses and research of the study area. Comprehensive and clear figures and charts summarize such considerations, which commonly include:

- Storm Frequency
- Slope Steepness
- Local Fishing Practices
- Shipping Lanes
- Existing Cable/Pipelines
- Sea Surface Temperatures
- Seafloor Temperatures
- Wind and Swell Vectors
- Protected Areas
- Maritime Boundaries

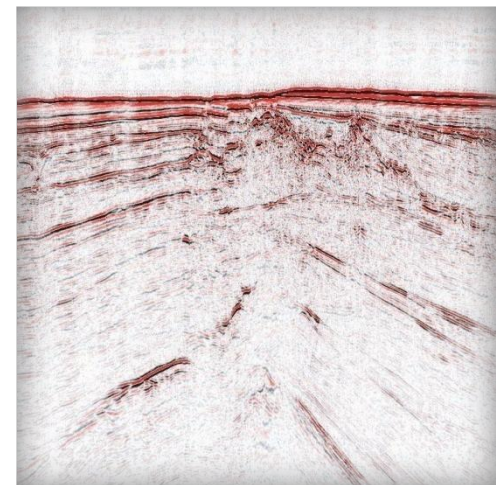


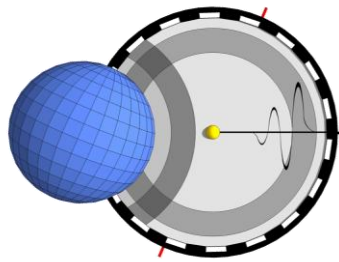
# GEO-MARINE TECHNOLOGY, INC.

A Geological, Geophysical, and Hydrographic Survey Consultancy

## WHAT WE DELIVER

QUALITY, INTEGRITY AND EXPERIENCE





# GEO-MARINE TECHNOLOGY, INC.

A Geological, Geophysical, and Hydrographic Survey Consultancy

## QUALITY:

Our products meet or exceed the guidelines established by the International Hydrographic Organization (IHO), the International Cable Protection Committee (ICPC, 2011) and the United Kingdom Offshore Operators Association (UKOOA, 2008), and comply with the reporting requirements set forth by the Bureau of Ocean Energy Management, Regulation and Enforcement (BOEMRE) in NTLs 98-20, 06-P01, 2008-05 and 2007-G01 for hazards and archaeological surveys. Our reports are produced in DOC(X) and PDF formats, and are available in electronic files and hard copies. Charts are produced in DWG and PDF formats, and come with fully-attributed, Makai-compatible electronic files.

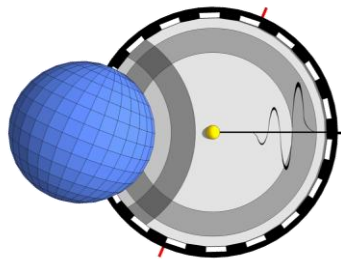
## INTEGRITY:

Our products reflect the highest ethical standards for data analysis and interpretation, and our reputation reflects our commitment to those standards. We will use every means at our disposal to extract meaning from a data set, but we will not propose any conclusion or recommendation we cannot defend.

## EXPERIENCE:

Geo-Marine Technology has successfully produced over 1000 hazard-analysis and route-investigation reports for nearly two hundred reputable clients in 25 countries. Some of our more frequent clients include the following, and we invite you to ask any of them about their experience with us.



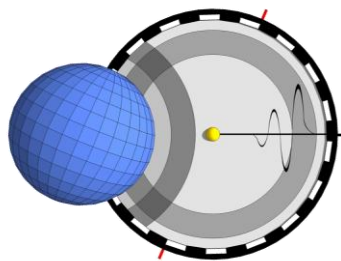


# GEO-MARINE TECHNOLOGY, INC.

A Geological, Geophysical, and Hydrographic Survey Consultancy

## CONTACT US





# GEO-MARINE TECHNOLOGY, INC.

A Geological, Geophysical, and Hydrographic Survey Consultancy

## INFORMATION:

Our office is one of several in a converted early-1900's brick-and-timber mercantile warehouse in the heart of Missoula, Montana.

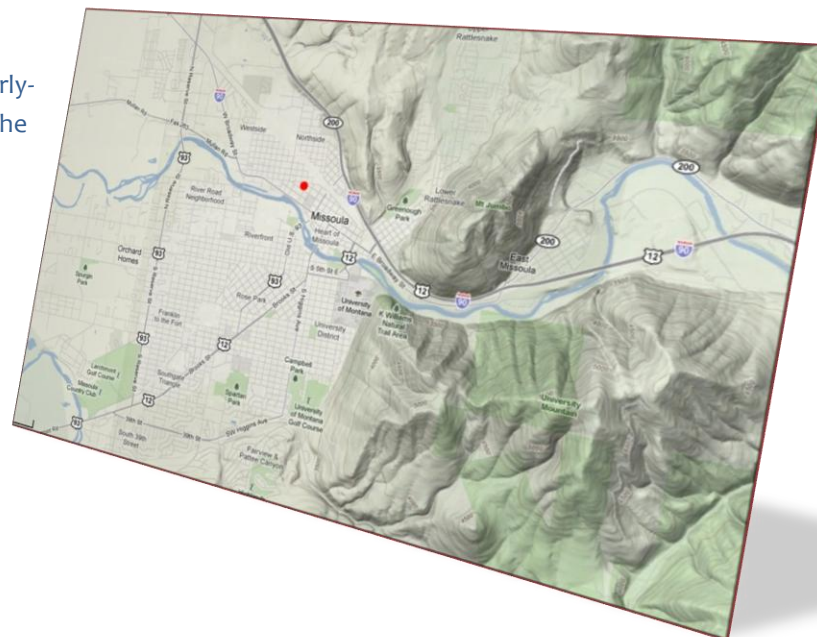
- Suite 12

725 West Alder Street  
Missoula, MT 59802  
USA

Phone: 406.721.1599

Fax: 406.721.1599

E-mail: [services@geomarinetech.com](mailto:services@geomarinetech.com)

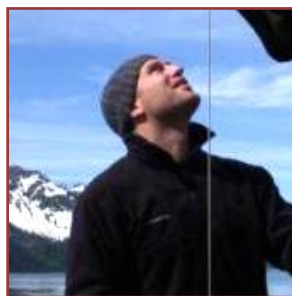


## EMPLOYEES:

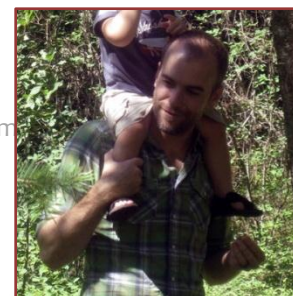
In addition to a number of support staff, the chief constituents of the Geo-Marine Technology team are:



**Mr. John L. Rietman**  
President  
Geologist/Geophysicist  
[jr@geomarinetech.com](mailto:jr@geomarinetech.com)  
[Profile](#)  
[Résumé](#)



**Mr. Beau Pallister**  
Vice President  
Geologist/Geophysicist  
[bo@geomarinetech.com](mailto:bo@geomarinetech.com)  
[Profile](#)  
[Résumé](#)



**Mr. Matt Zunker**  
DTS Director  
Geologist/Geophysicist  
[mz@geomarinetech.com](mailto:mz@geomarinetech.com)  
[Profile](#)  
[Résumé](#)

